

## Urban climate resilience European-African knowledge exchange toolbox

Floris Boogaard<sup>1</sup>, Marieke de Groen<sup>2</sup>, Rick Heikoop<sup>3</sup>

### Abstract

There is a clear demand for collaborative, knowledge sharing tools for urban resilience projects. Climatescan is an interactive, web-based map application for international knowledge exchange on 'blue-green' projects around the globe. The tool was applied during the Adaptation Futures & The Water Institute of Southern Africa (WISA) conferences, June 2018, in Cape Town. The use of climatescan by different stakeholders during the event led to recommendations for a better application of the web-based map in Africa and around the world.

**Keywords:** climate adaptation, urban resilience, open source, toolbox

### Introduction

There is a wide diversity of projects undertaken to address urban resilience and climate proofing in the world. International interactive open source tools are used as communication aids to promote engagement with stakeholders in the field of climate change and related environmental issues (Hall 2001, Hamill, et al., 2013, Tipping et al., 2015).

During an international knowledge exchange mission from The Netherlands to Cape Town and Durban in November 2017, the need for international knowledge exchanges of Best Management Practices (BMPs) was highly recommended. Climatescan is an optimized interactive online map application that provides an easy-to-access database of international project information in the field of urban resilience and climate adaptation – or 'blue-green' projects - around the globe. The tool is able to support the tasks of prioritising risks, evaluating flood models, designing appropriate remedial measures and map several sustainable urban drainage systems. Climatescan.nl has proven to be a successful tool with over 10,000 users and more than 3,000 international projects (mostly European). The tool is used in city climatescans around the world [Heikoop et al., 2018] and several international projects (Innovations for eXtreme Climatic EventS and WaterCo-Governance: INXCES and WaterCoG<sup>2</sup>) and workshops, and serves the needs of different stakeholders (Boogaard, et al., 2017). City Climatescan and wetskills Wetskills are new ways of international authentic learning for young professionals with a passion for water. The Challenges take place worldwide during international water related events (as WISA). In mixed teams, the international participants work on transdisciplinary with companies and (governmental) organisations.

---

<sup>1</sup> Hanze University of Applied Science, Groningen, The Netherlands

**Email:** floris@noorderruimte.nl

<sup>2</sup> AquaLinks Research and Implementation, Johannesburg, South Africa

<sup>3</sup> University of Applied Science Rotterdam, The Netherlands

<sup>2</sup> <https://inxces.eu> and <http://www.northsearegion.eu/watercog/>

;

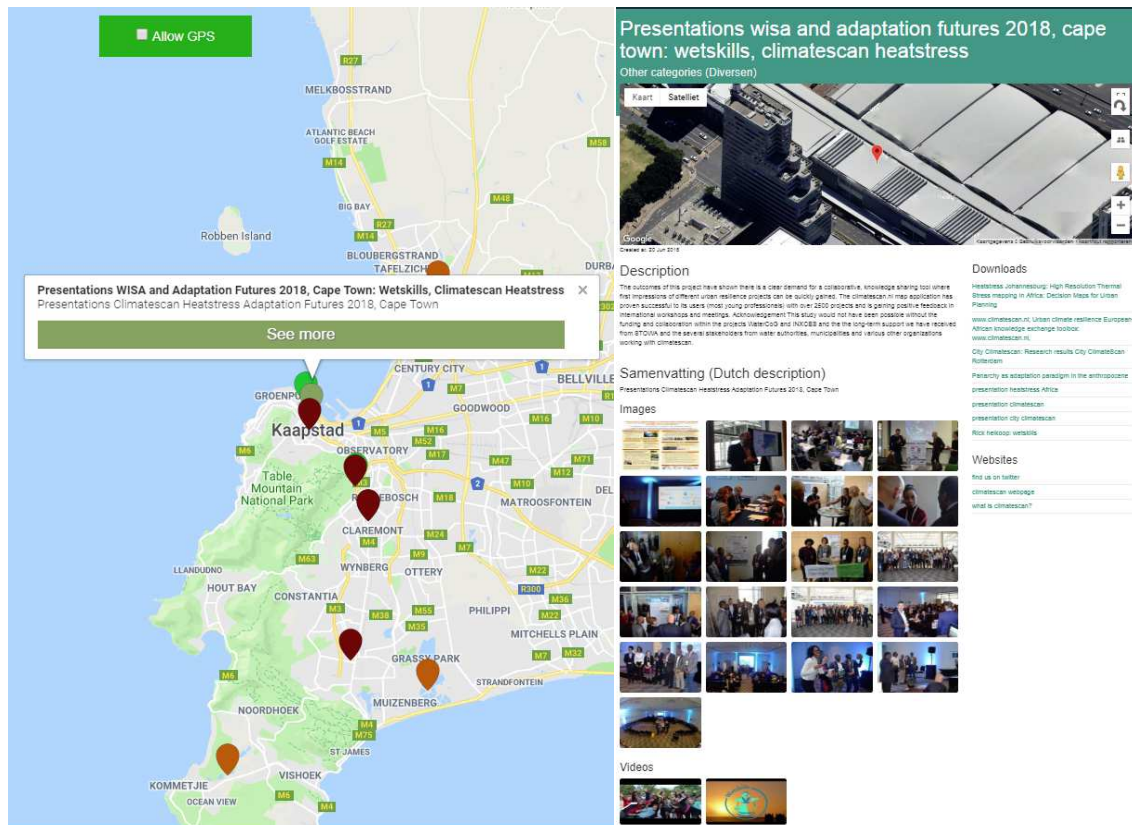
The open source webtool ([www.climatescan.nl](http://www.climatescan.nl)) was applied during the Adaptation Futures & The Water Institute of Southern Africa (WISA) conferences, , both held in June 2018 in Cape Town.

## **Methodology**

Engagement with stakeholders through workshops and semi-structured interviews within EU projects, as INXCES and WaterCoG, resulted in evaluating Climate-scan in order to judge the need and potential for implementation of tools such as Climate-scan in Africa. The objective of this study is to implement and evaluate [www.climatescan.nl](http://www.climatescan.nl) which is currently primarily used in Europe and Asia, in a South African context. The evaluation was undertaken via semi-structured interviews during workshops with experts (lecturers, academics) and young professionals that took place during a 'toolshed' workshop at Adaptation Futures, and as a case study in the Wetskills Water Challenge during the WISA conference. The Wetskills Water Challenge is a pressure-cooker programme for young students and young professionals with a passion for water from all over the world. They met before and during WISA, and worked in transdisciplinary and transcultural teams on water-related topics such as the Climatescan-case. Both conferences took place in June 2018 in Cape Town.

## **Implementation in Africa**

Previous studies indicated that stakeholders are in need of tools that are interactive, open source and provide more detailed information on climate adaptation projects (location, free photo and film material) [Boogaard et al., 2017]. The first African projects were uploaded on Climate-scan during conferences in June 2018 (**Figure 1**). The webtool and app for easy uploading of best management practices is herewith promoted for use in Africa by all who would like to contribute.



**Figure 1.** African projects uploaded during the respective conferences (Adaptation Futures and WISA Wetskills) and a link to all presentations during the conferences <https://www.climatescan.nl/projects/2537/detail> (Source: Authors own)

Several participants at WISA downloaded the app and uploaded stormwater Best Management Practices. Stormwater Best Management Practices are measures designed to reduce the rate and quantity of surface water runoff from developed areas and to improve runoff water quality. Stormwater BMPs are techniques, measures or structural controls used to manage the quantity and improve the quality of stormwater runoff. Figure 1 shows an example of an uploaded project in Johannesburg. Good examples of sustainable urban drainage systems in South Africa are in most cases implemented either in gated communities or gated office parks or in areas that are for safety reasons not easily accessible if you do not know the way. The google view and the GPS function to help somebody interested get to site is therefore in the South African context a great advantage of [climatescan.nl](https://www.climatescan.nl).

# Bioswale - johannesburg, woodmead

(bio) swale (Wadi)

Map

Satellite

Google

Created at: 30 May 2018

Imagery ©2018, CNES / Airbus, DigitalGlobe

## Description

A stormwater retention area is obliged in Johannesburg for every development. But most are ugly and not adding to nature. This one is a good example which functions as a bioswale. This project is added by AquaLinks.co.za to contribute to the Green Infrastructure Strategy of Johannesburg by visualizing existing successes in Johannesburg.

## Downloads

No downloads added

## Websites

[AquaLinks Research and Implementation](#)

## Samenvatting (Dutch description)

In Woodmead North Office Park, regenwater retentie vindt plaats met begraste bioswales.

## Images

Figure 1 example of an uploaded project in Johannesburg: bio- swale.

Users of climatescan can create their own climate adaptation categories and upload projects. The most uploaded projects within categories of different types of measures are listed in **Table 1**.

**Table 1.** Top 10 uploads in categories (Source:) most definitions from <https://www.susdrain.org/resources/glossary.html>

number	name	definition	Visual (source: wwclimatescan.nl)
1	Swale	A shallow vegetated channel designed to conduct and retain water, but may also permit infiltration. The vegetation filters particulate matter.	
2	Constructed wetland	Wetland: flooded area in which the water is shallow enough to enable the growth of bottom-rooted plants. Wetlands are constructed in urban area to store water after stormwater events and improve waterquality.	
3	Waterharmonica	Ecological engineering (constructed wetland) treating waste water into usable surface water. The Waterharmonica focusses on integrated ecological engineering processes, by optimising multifunctional constructed wetland processes.	
4	Green roofs (and walls)	A roof with plants growing on its surface, which contributes to local biodiversity. The vegetated surface provides a degree of retention, attenuation and treatment of rainwater, and promotes evapotranspiration. Sometimes referred to as an alternative roof.	
5	Floating urbanization	Floating or amphibious constructions as floating homes will adapt to variation of waterlevels (flooding, drought). Floating homes are constructed around the world to adapt to climate adaptation.	
6	Permeable pavement	A permeable surface that is paved and drains through voids between solid parts of the pavement. A permeable is a surface that is formed of material that is itself impervious to water but, by virtue of voids formed through the surface, allows infiltration of water to the sub-base through the pattern of voids, for example concrete block paving.	



7	Opportunities for adaptation	This categorie shows locations that provide opportunities for climate adaptation. Uploaded projects are implementation of nature based solutions or locations that are suited for urban resilience	
9	Hollow gully free roads	Roads that are constructed as drainge. An example is a surface flood pathway: routes in which exceedance waterflows are conveyed on the ground.	
10	Sub-surface infiltration	A sub-surface structure into which surface water is conveyed, designed to promote infiltration.	
	Heatstress measures	An upcoming category linked to implementation of green and blue measures in previous categories (swales, green roofs and walls, permeable pavement, raingardens etc.)	

The participants of the workshop at Adaptation Futures gave positive feedback on the free and open acces usage and the number of projects uploaded (over 2000 projects in 2 years). However, this 'learning-by-doing' concept also raised legitimate questions of ownership, quality control, maintenance, business model design and sustainability. Most users wanted to incorporate and engage with such development issues within a more interactive platform that includes stakeholders. Climate-scan was also used during the Wetskills case study at the WISA conference [figure 2].



Figure 2 Minister Gugile Nkwinti of Water and Sanitation of South Africa and Wetskills participants that used *climatescan* during the Wetskills challenge [Dutch water sector, 2018].

## Conclusion

The website was particularly appreciated by postgraduate students, lecturers and researchers. The webtool has been used during workshops in South Africa

The outcomes of this project have shown there is a clear demand for a collaborative, knowledge sharing tool where first impressions of different urban resilience projects can be quickly gained. The semi-structured interviews during and outside the South Africa workshops yielded positive feedback on the free and open access usage. The challenge for Climate-scan will be changing the free 'learning-by-doing' concept to a platform with more interaction with stakeholders and clear strategy on ownership, quality control, maintenance, business-model design and sustainability. It is hoped that the new Climate-scan uploads will stimulate international knowledge exchange on wicked problems such as drought, heatstress and floodings, while clear recommendations for a better application of the web-based map in South Africa, and beyond, provide guidance on how the tool can best be used in the field of adaptation policy and practice.

## References

Boogaard, F., Tipping, J., Muthanna, T., Duffy, A., Bendall, B., Kluck, J. (2017) *Web-based international knowledge exchange tool on urban resilience and climate proofing cities: Climate-scan*. Presentation: 14th IWA/IAHR International Conference on Urban Drainage (ICUD), 10-15 September 2017, Prague.

Dutch water sector, WISA2018: 'Bye Day Zero' wins Wetskills South Africa challenge

Posted on 28 June 2018 (<https://www.dutchwatersector.com/news-events/news/31988-wisa2018-bye-day-zero-wins-wetskills-south-africa-challenge.html>)

Hall, H. (2001) *Input Friendliness: motivating knowledge sharing across intranets*. Journal of Information Science 27 (3), 139-146

Hammill, A., Harvey B. & Echeverria D. (2013) *Knowledge for action: an analysis of the use of online climate knowledge brokering platforms*. Knowledge Management for Development Journal 9 (10), 72-92

Heikoop, Boogaard, Research results City ClimateScan Rotterdam, Adaptation Futures 2018 Dialogues for solutions, 5th international climate change adaptation conference, Cape Town 18-21 June 2018.

Tipping, J., Boogaard F., Jaeger R., Duffy A., Klomp T., Manenschijn M. (2015) *Climatescan.nl: the development of a web-based map application to encourage knowledge-sharing of climate-proofing and urban resilient projects*. Presentation: International Water Week., 3 November 2015, Amsterdam.

Websites:

<https://inxces.eu>, consulted 24 September 2018

<http://www.northsearegion.eu/watercog>, consulted 24 September 2018

<https://www.susdrain.org/resources/glossary.htm>, , consulted 24 September 2018